

## Part III - Chemoventory 3.0 Installation

### Requirements:

By this time, you should have installed and tested successfully

1. Web server (apache/IIS)
2. PHP web application server
3. Zend Encoder accelerator (not required for developer version)
4. MySQL and user account other than root for MySql

If not, please complete the installation and test procedures.

For installation-test, please use chemoventory/test/ files

### Methodology:

Each chemical (bottle) is identified as separate entity called chemicalID.

Each chemical is owned by one person at a time and the chemical can be transferable to any other person using the chemoventory tools.

Each chemical is associated with properties by its chemical name. Even though you will have multiple chemicals, you will have one property associated across the inventory management.

Each Chemical → Related by → One Chemical ID

Each Chemical name → Related by → Properties

CAS → MSDS data sheet

Each Chemical ID → owned by → userID

Can be transferred to another user/owner

Each User ID → One Role → Multiple Functions

Example:

sysadmin (user name) → admin (role) → All functions

user1 (user name) → user(role) → limited functions

Basically you assign tailored function for each role you create and assign to users.

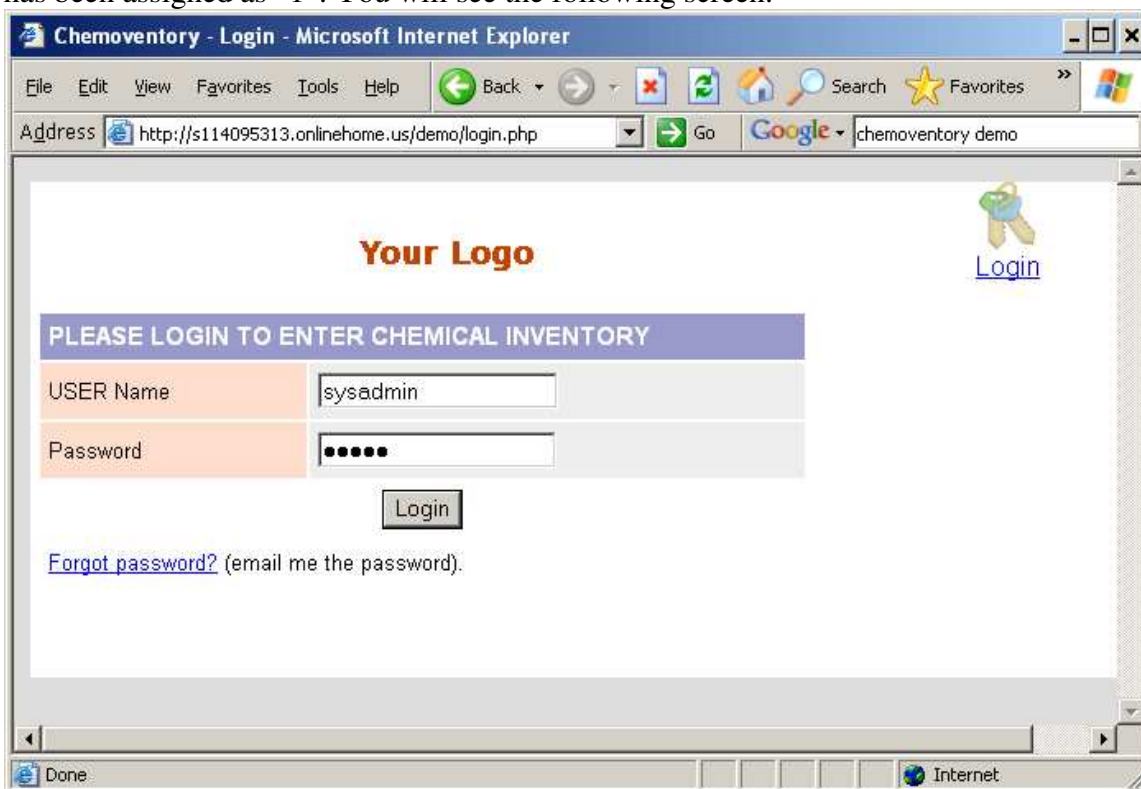
Each chemical may or may not have CAS. If you have CAS you can add MSDS documents. You can file as many MSDS document as you want for each chemical. When you upload the MSDS, it will be associated with CAS followed by consecutive numbers.

Eg 210-65-01\_23 (The part before underscore represent CAS and the rest refers some consecutive number from chemoventory).

New features: Each user will have userid , username, email etc. Email will be used to communicate with users. If you set threshold amount, if the amount goes lower than that amount, then owner will get alert email. Similarly, if the chemical is expiring in 7 days, then also you will get an alert emails.

### Default login

When you login for the first time, you have to use user name 'sysadmin' and password 'chemo'. The user 'sysadmin' by default has been assigned as admin user and its userid has been assigned as "1". You will see the following screen.

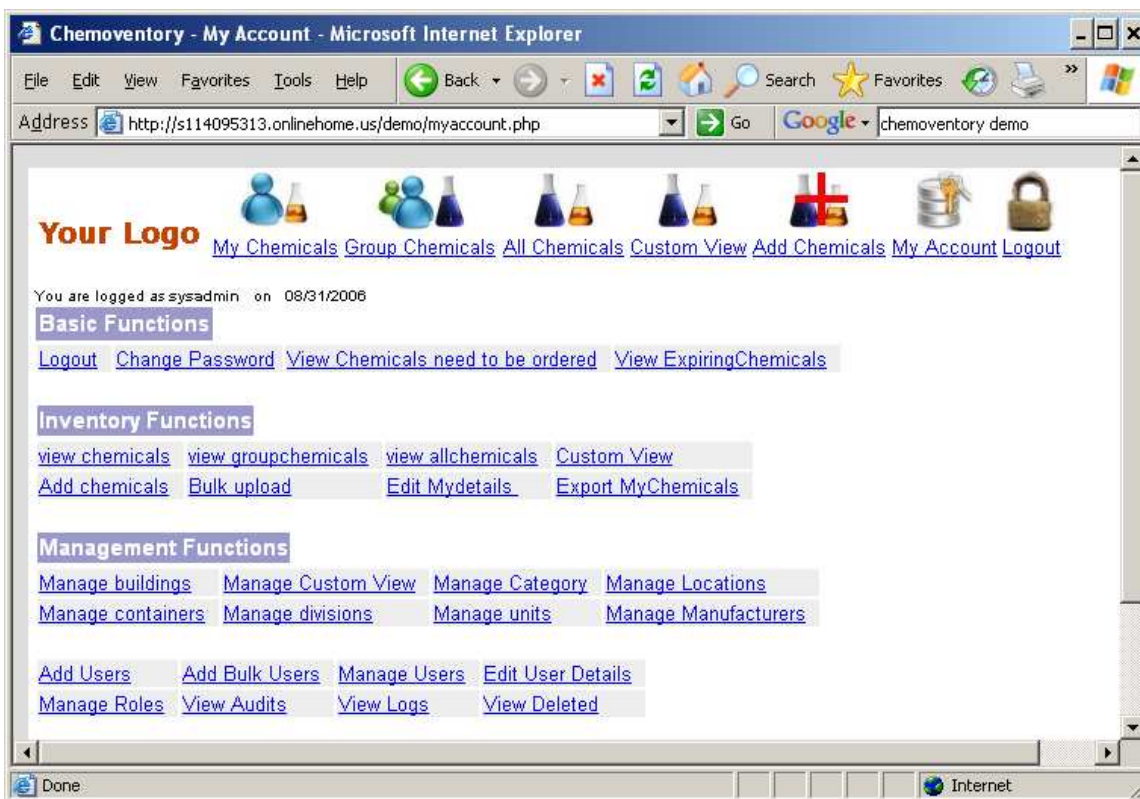


**Login screen**

You can change the username 'sysadmin' to whatever you want to call/name it. Do not change the roles of this user from admin. If you change, you will have problem in administrating some of the functions.

**Warning:** By any chance do not change 'userid-1's role from admin to any other role. And also do not delete any management and basic functions to admin role.

By default, you will see 3 different groups of functions Basic, Inventory and management functions for "sysadmin". Which are specific for "admin role". Depending on the roles you set for each user, you will see different functions for different users.



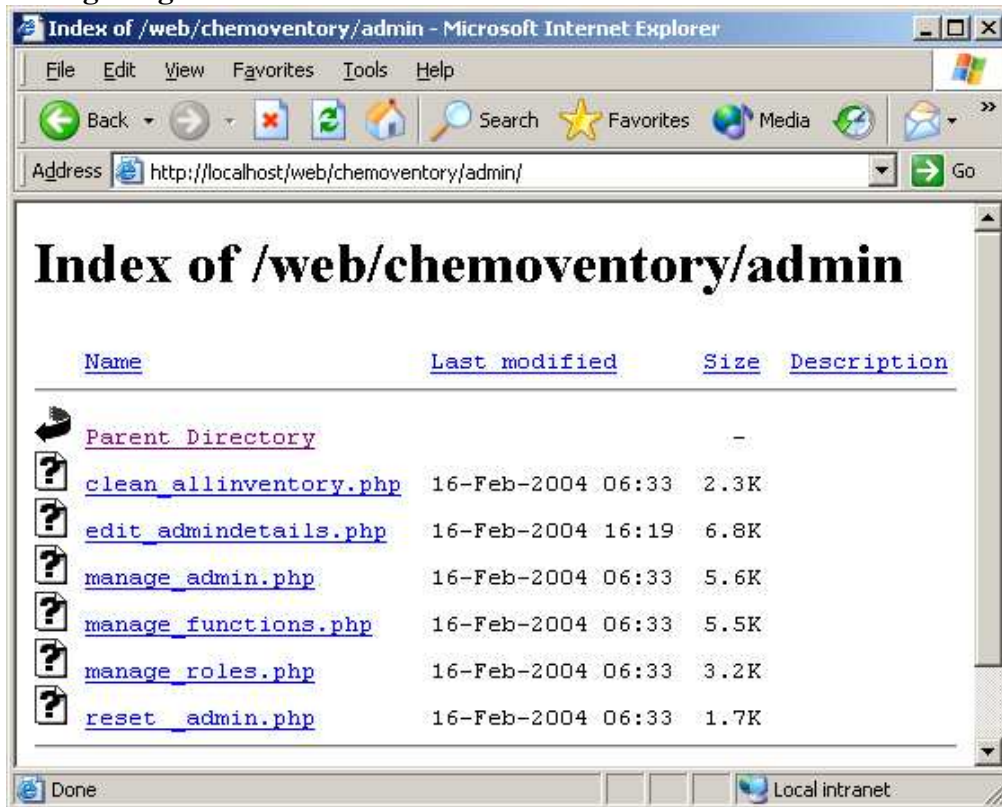
### MyAccount screen

Once you login, you must set “sysadmin” email and other details.

To do so, visit <http://localhost/chemoventory/admin/> or appropriate URL

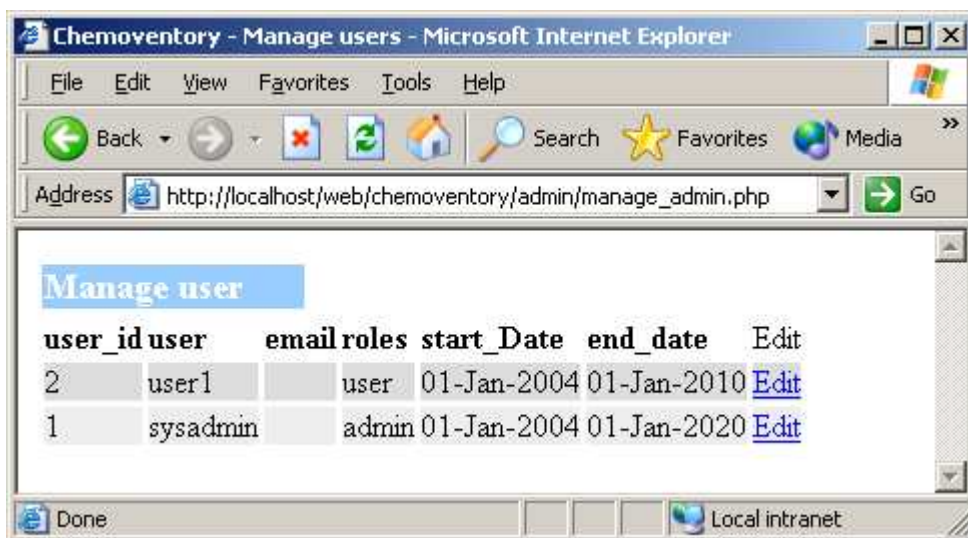
If you have allowed to see index, you can see the following files under admin setup:

## Configuring admin user



Please note that, these files are given for admin setup and for emergency use only. You must delete this directory as soon as complete admin setup.

Click on the `manage_admin.php` or type this URL  
[http://localhost/chemoventory/admin/manage\\_admin.php](http://localhost/chemoventory/admin/manage_admin.php)



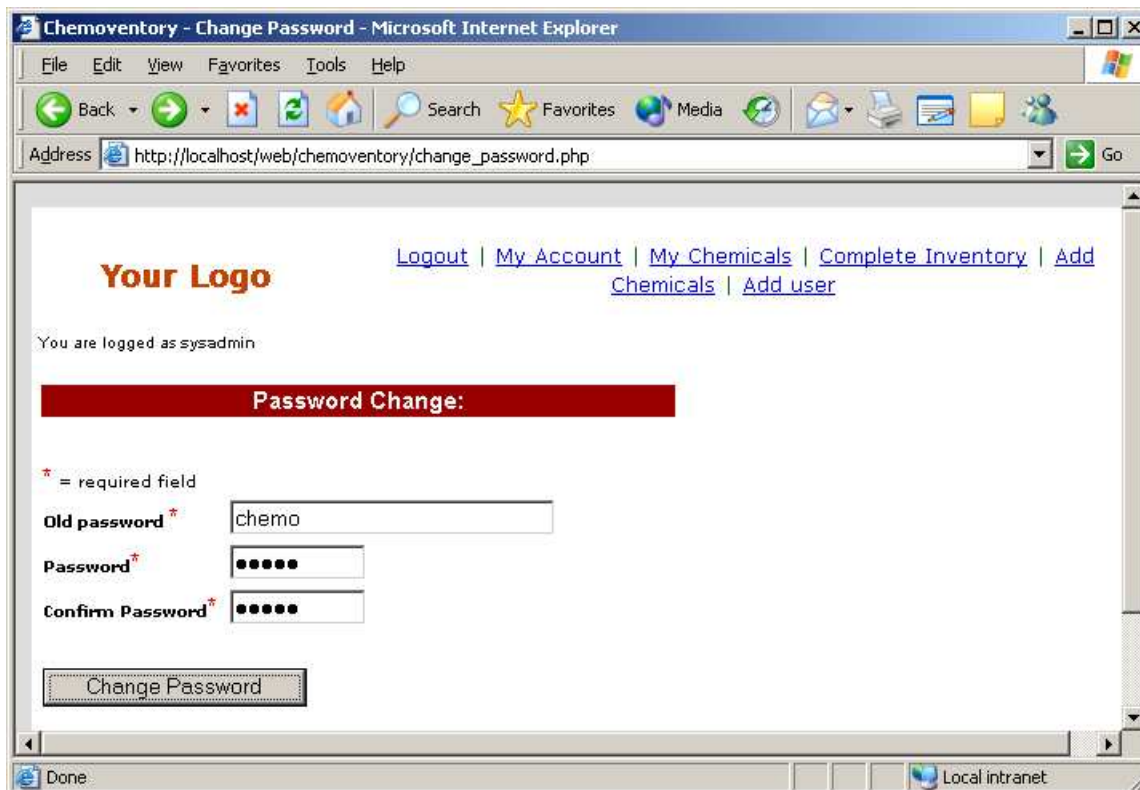
Edit the user `sysadmin` using edit link



Now you can change the name of user from “sysadmin” to your short name. (All user name should be one word without any special character or spaces) and set email and set any future date (farthest date allowed is 2020-01-01).

If you set invalid date the date will set to current date.

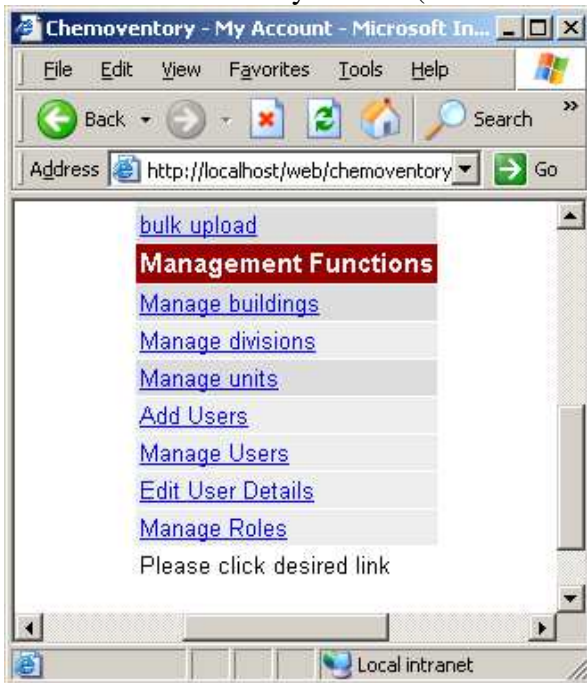
Once, you set email, change your password from “chemo” to your secret password. To change password visit URL `http://localhost/chemoventory/change_password.php`



As soon as you set this, make sure you received confirmation email. Otherwise, there is problem with you email setup. Until you set correct email setup, you cannot proceed further. Once you have received email, it is safe to logout and test your new password and or new user name.

Next, step you could add divisions or buildings. To use this facility, you should have function of edit\_buildings and edit\_divisions respectively at your admin role. By default these functions has been added to admin role.

Under myaccount link (located at the top), you will see this functions, if not you have to add these functions to your role (“admin” role”)



## Manage Buildings & Divisions

You can add or edit or delete buildings. Similar to Manage buildings, you can add or edit or delete divisions. (Note: Building may be dropped in the future versions.)

At this time, you should add all the buildings and divisions; you want to list for your inventory. Deleting building or division at any time will not automatically delete the entries from the inventory, which are located at these division or building. However future entry will be not allow automatic listing of these entries.

If you do edit the entries, all the data in inventory will be automatically updated.

Also note that, all divisions and building will be automatically convert to Upper case words (only first letter of the word)

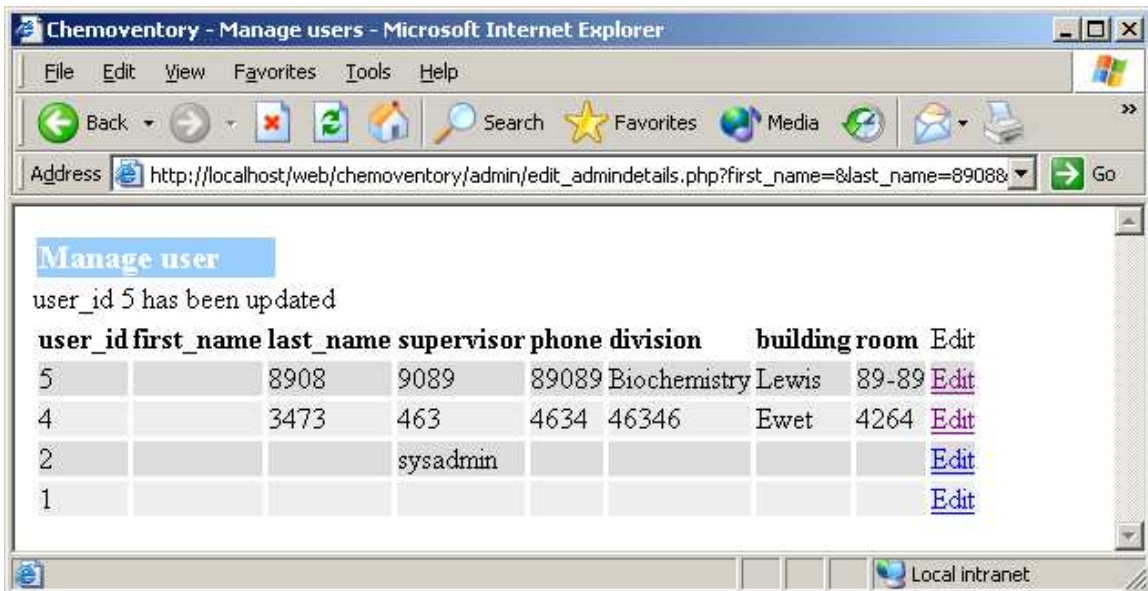
All units will be automatically converted to lower case.

You should follow these rules, in order to maintain consistency in the inventory.

All containers will be as entered as such.

Note: If the users do use bulk upload without proper division or buildings or units then over a time your inventory will have mixed building or division or unit names and may not be easy to manage. So, please advise users to use appropriate list of allowed division, buildings and units

Once you set or added the entries for Buildings and Divisions you can set the admin details using the URL [http://localhost/chemoventory/admin/edit\\_admindetails.php](http://localhost/chemoventory/admin/edit_admindetails.php). Remember admin user id is "1" and set appropriate first name, last name, supervisor, phone, division, building and room #.



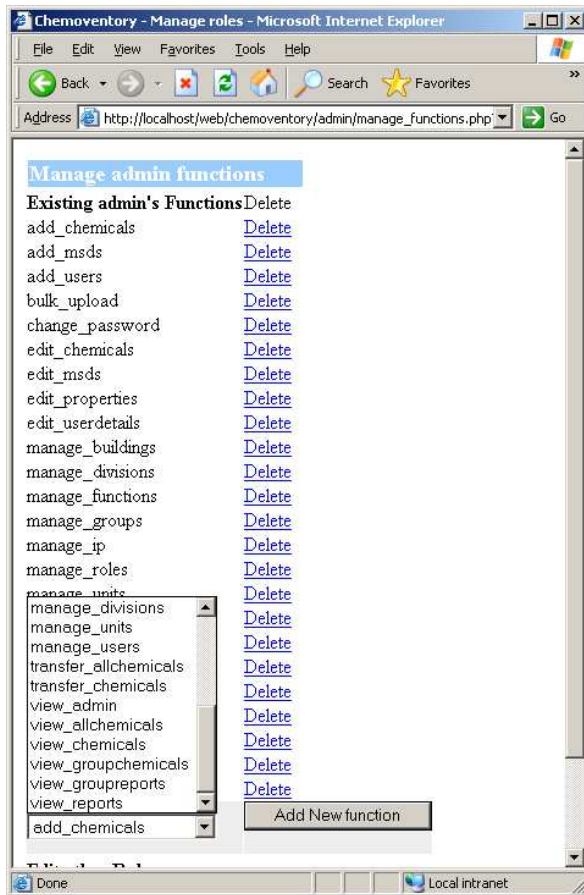
**Manage user**

user\_id 5 has been updated

user_id	first_name	last_name	supervisor	phone	division	building	room	Edit
5		8908	9089	89089	Biochemistry	Lewis	89-89	<a href="#">Edit</a>
4		3473	463	4634	46346	Ewet	4264	<a href="#">Edit</a>
2			sysadmin					<a href="#">Edit</a>
1								<a href="#">Edit</a>

Make sure "admin" role has all the available functions.

You can check this by this URL [http://localhost/chemoventory/admin/manage\\_roles.php](http://localhost/chemoventory/admin/manage_roles.php)



Once all this process has been completed, you should delete chemoventory/admin/ directory and the files in there. Keep this directory in a separate CD or storage drive. You may need these files, when you have trouble in logging as user\_id "1" or troubles in "admin" role.

## Roles & Functions

You assign set of functions to a role. And associate each user with a role. For example admin is a role and user is another role and group\_leader is another role. By default, you will have 3 roles

admin  
group\_leader and  
user

Functions are like view\_chemicals, view\_allchemicals, manage\_users etc. We have assigned all the functionalities to “admin”. If not, you can add using the above-mentioned methods using links provided at admin directory. And some set of functions for each other role. You can create as many roles as you want and assign set of functions to it.

A

## Creating New Users

Users with “admin” role or users who has role, which has function to create another user, can create another user. When one creates new user, new user will be assigned supervisor of whoever created. And all new users will be created as user- role with one-year period as end\_date. Password will be automatically emailed to the user’s email address, you enter at the time of creation.

User name, details, supervisor and end\_date can be changed by the function manage\_users and edit\_userdetails.

[http://localhost/chemoventory/manage\\_users.php](http://localhost/chemoventory/manage_users.php)

The screenshot shows the 'Manage user' interface. At the top, there is a navigation menu: **Your Logo** | [Logout](#) | [My Account](#) | [My Chemicals](#) | [Complete Inventory](#) | [Add Chemicals](#) | [Add use](#). Below this, it says 'You are logged as sysadmin'. The main section is titled 'Manage user' and contains a table with columns: User, E-mail, Role, and End Date (yyyy-mm-dd). The first row shows user '9089' with email '890@4.com', role 'user', and end date '2005-02-18'. There is an 'Edit user' button next to this row. Below the main table is a detailed table with columns: user\_id, user, email, roles, start, and Edit. The detailed table lists several users, including '9089' (admin), '463' (admin), 'user1' (user), and 'sysadmin' (admin). At the bottom, a footer note states: 'This is online demo for chemoventory2.0 full version. For details visit <http://www.chemolink.com/products.php>'.

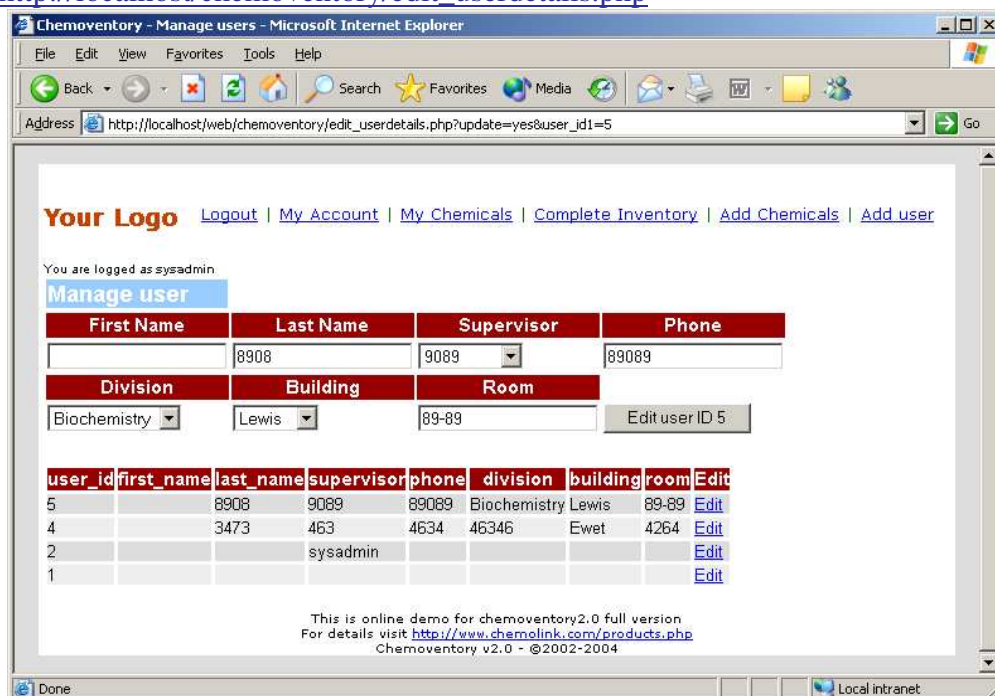
User	E-mail	Role	End Date (yyyy-mm-dd)
9089	890@4.com	user	2005-02-18

user_id	user	email	roles	start	Edit	
5	9089	890@4.com	admin	18-Feb-2004	18-Feb-2005	<a href="#">Edit</a>
4	463	236@242.com	admin	18-Feb-2004	18-Feb-2005	<a href="#">Edit</a>
3	user1	klk@424.com	user	18-Feb-2004	18-Feb-2005	<a href="#">Edit</a>
2				01-Jan-2004		<a href="#">Edit</a>
1	sysadmin	ulag@bloodcenters.org	admin	01-Jan-2004	18-Feb-2014	<a href="#">Edit</a>

Incase, you entered invalid end date, current date will be entered ad end\_date. You can assign any role you want form the all-available roles.

[http://localhost/chemoventory/edit\\_userdetails.php](http://localhost/chemoventory/edit_userdetails.php)



If you assign users with details, these details will be automatically available during single addition of chemicals.

### Managing Roles and functions

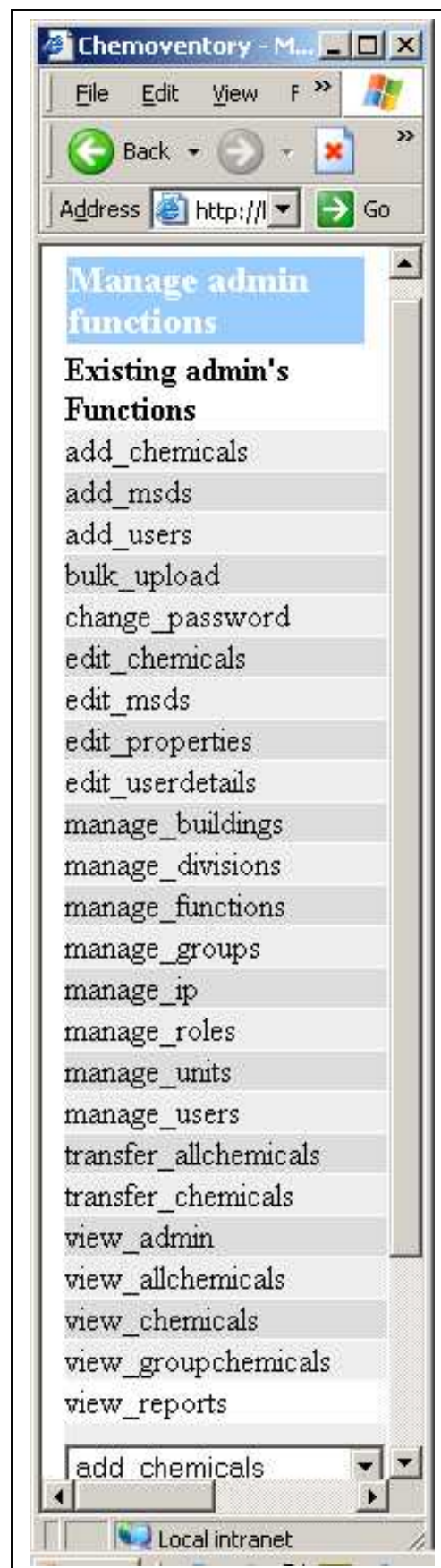
By default, you have 3 roles and limited set of functions. You can create more roles and assign set of functions to each it. You can assign a role to user. By default all new users will be created with user-role.

You can change assigned functions for these roles (except for admin-role). Depending on level of need, you can create more roles and assign to users. And remember to assign basic functions of change password and or view\_chemicals.

This the URL you can use to manage roles and functions

[http://localhost/chemoventory/manage\\_roles.php](http://localhost/chemoventory/manage_roles.php)

To add new role just add. Please use single word to create a user. Once you created role, you cannot delete or edit the role. However, you can change the assigned functions to it. Click on the role to edit assigned functions



## Manage Custom view (August 2006)

There has been request to add custom view of chemical columns you see. We understand that one size does not fit every one.

So we have added custom view of columns you want. Each user can set his/her own columns to see. You have choice of more than 15 columns : building, cas, catalog\_no, category, chemical, container, container\_size, division, email (owner's email), invoice\_number, location (chemical location), lot\_no, purchase\_date, purchase\_order, purity, quantity (at the time of acquisition), quantity\_inhand, received\_date, room, threshold, user (owner's login name), .user\_id, manufacturer, mixture and units. Chemical name, cas, quantity-in-hand and units are pre-assigned as first two columns. For the rest of column, you can tailor your own desired column. Once you assigned, you must logout and re-login to have these changes in-effect in custom view pages. Each user can assign his own way to see the columns.

The screenshot shows a web browser window titled "Chemoventory - Manage column - Microsoft Internet Explorer". The address bar shows the URL "http://s114095313.onlinehome.us/demo/manage\_column.php". The page content includes a navigation menu with links like "My Chemicals", "Group Chemicals", "All Chemicals", "Custom View", "Add Chemicals", "My Account", and "Logout". A message states: "You are logged as sysadmin on 08/31/2006. First two columns, chemical[CAS] and quantity in custom view comes as default. At any time, each user can add/build/manage additional columns to view. After changing columns, please logout and relogin to have effect of recent changes." Below this is a "Manage column" section with a table of columns and their delete links:

Column Name	Delete
Chemical[CAS]	
Quantity Units	
user	<a href="#">Delete</a>
quantity_inhand	<a href="#">Delete</a>
manufacturer	<a href="#">Delete</a>
location	<a href="#">Delete</a>
room	<a href="#">Delete</a>

Below the table is an "Add New column" button and a dropdown menu with the following options: building, building, cas, catalog\_no, category, chemical.

## Functions

You may see lots of functions. Most of them are self-explaining.

For user's to view their chemicals – you should add this function

To add chemicals add\_chemicals

These are the functions we have created for chemoventory3.0 full versions. Some of them are not implemented.

If you allow bulk\_upload (from tab delimited text file as described in the procedure), then those people who belong to roles with function “bulk\_upload” can upload list of chemicals in few seconds.

edit\_properties and add\_properties are another set of functions. They are related chemicals by chemical name.

Similarly add\_msds function allows uploading scanned or saved MSDS documents directly to chemoventory and they are related by chemical name. You can upload as many as msds sheets for a given chemical

Change\_password will allow to change\_password. Make sure all roles get this function.

Transfer\_chemicals allows to transfer chemical from one user to another user or send to recycle or delete the entry. Please note that, the program transfer entire chemical to user.

Transfer\_allchemicals is management function. Please do not assign to any ordinary users. This will allow transferring the entire chemicals one user to another user.

Printing Barcode is possible. If you enable print\_barcode. By default we give most common barcode type C39. All of the commercial barcode scanner/reader can read this kind of barcode, so that automatic inventory will be possible. If you request, we can change to these type of barcodes C128B or C128A or I25.

### Best practices:

- Remove the admin and test directory once the installation is complete.
- Take a periodic backup of database or by the tools provided by chemoventory.
- Have common rules to make it uniform across inventory.
- Add your MSDS by scanning pages.

### Alert emails:

On each day during first logon of any user, the system will send an alert email to each owner, if they have chemicals less than threshold or will expire in 7 days.

To automate the alert email system, we recommend to have cron job (for unix systems) or scheduler (for windows) to handle this job. The best time to run this job would be anytime between 1AM and 7AM.

For windows scheduler, please remember whenever you change the windows user name password, you should reset scheduler job with new password.

Window start → control panel → Scheduler job

Make sure where you place the chemoventory\_script.bat file

(batch file has the following command:

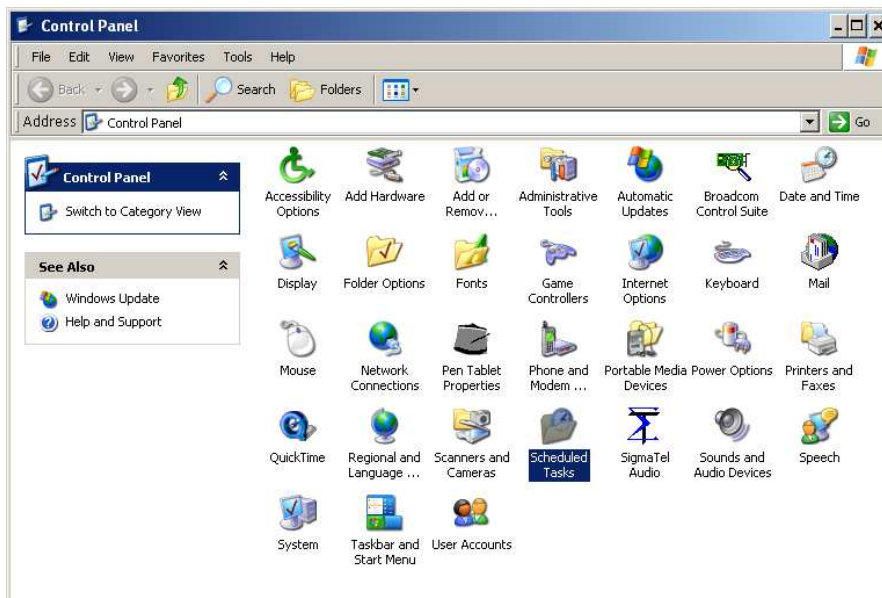
***@c:\php\php.exe c:/web\_sites/chemoventorys/chemoventory/dailyjob.php***

location of php executable file and the location of dailyjob.php

With this you can set for unix cron job using crontab –e or any GUI utility

For cron job run something like

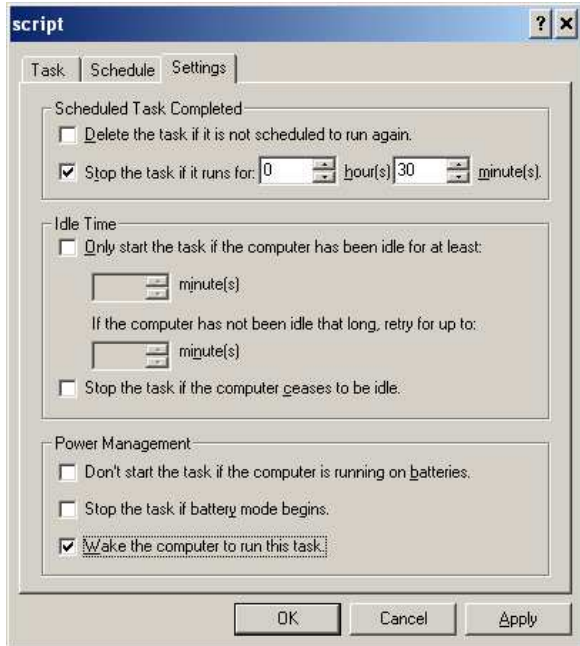
***01 05 \* \* \* /home/chemoventory/www/dailyjob.php***



Set the job to run for every day morning 5AM. You may exclude weekends, if you wish. The following additional features may be worth to make a note of it. Stop the job, if it runs beyond 30 min. (Normally it will take less than a minute to run). Also wakeup function is useful.

These kind of scheduler is recommended, if you have more than 25 users or, if you consider alert emails are important for your activity.

What will happen, if the scheduler fails? If scheduler fails on any day, if the alert emails weren't sent, then whenever first users logins then alert email wakeup and sends email.



## FAQ

### Where to report bugs?

Bugs can be reported online forum: <http://www.chemoventory.com/thread.php>  
Alternatively sent email to [admin@chemoventory.com](mailto:admin@chemoventory.com)

### What kind of support is available?

Email and chat support are free. Phone support is available at the rate of \$50/hr

### What if chemoventory development is further stopped?

Each purchased customers will get complete source code chemoventory as free-of-charge.